

Accutome Connect[™] Installation Instructions

REV -



ATTENTION:

PLEASE READ ALL ENCLOSED INFORMATION PRIOR TO USING ACCUTOME DIAGNOSTIC EQUIPMENT.

IF A LAPTOP HAS BEEN PURCHASED FROM ACCUTOME, ALL SOFTWARE NECESSARY TO RUN THE ACCUTOME SYSTEM IS PRE-INSTALLED ON ACCOMPANYING LAPTOP.

ACCOMPANYING SOFTWARE USB DISK IS TO BE USED IF INSTALLING SOFTWARE ON NON-ACCUTOME SUPPLIED COMPUTER.

INDEX

Recommended PC Specifications.....	3
Installation Instructions.....	3
Windows 10, 8, or 7 (64-bit)	3

RECOMMENDED COMPUTER SPECIFICATIONS

If the computer on which you intend to load the software does not meet or exceed the listed specifications, we highly recommend that you do not install the software.

It is recommended that the computer used in conjunction with the system you have purchased be dedicated for the sole use of Accutome's product. Installation of software not vital to the operation of the

system is highly discouraged, as it may detrimentally affect the performance of the system. Additionally, accessing the Internet will greatly affect the performance of the equipment and open the system to viruses and other harmful external factors and is therefore not recommended by Accutome.

1. **Processor** - Minimum Intel Core 2 Duo 2.20 GHz, Core i3 2.2 GHz or higher.
2. **Memory** - Minimum 4.0 GB RAM or higher.
3. **Video Card or Chip** - Desktop PC: Any NVIDIA or ATI Video Card with 256MB graphic memory or more. Laptop PC: Any NVIDIA, ATI or Intel Video Chip.
4. **Screen Resolution of Monitor** - High resolution monitor (minimum 1366 X 768 pixels; recommended 1600 X 900 pixels or higher) 19 inch for desktop. 15.4 inches or higher screen size for laptop.
5. **Hard Disk** - Minimum 80 GB, 7200 RPM, recommended 160 GB or higher for high patient flow site (more than 30 B-Scans per month).
6. **USB Ports** - Minimum of 3 USB 2.0 or USB 3.0.
7. **Medical Grade Power Supply**
8. **Operation System (OS)** - Windows 10®, Windows 8®, Windows 7® 64-Bit OS.

Installation Instructions

Windows 10, 8, or 7 (64-bit)

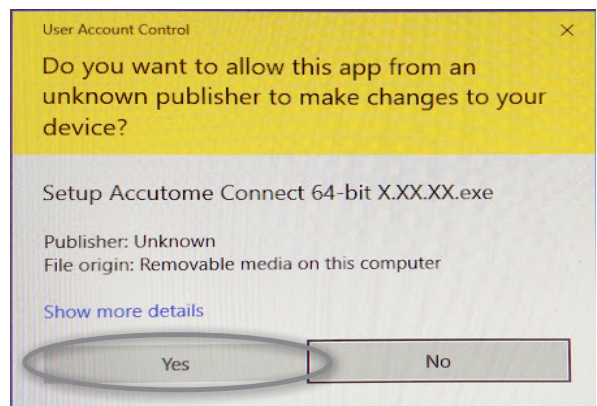
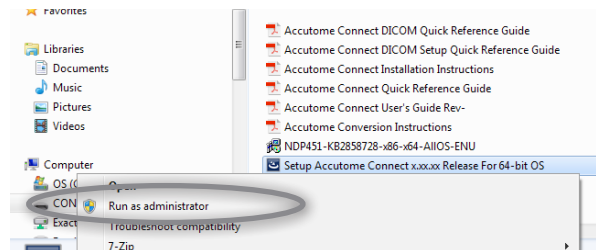
Follow the steps below to install the "Accutome Connect" application.

Current Customers: Be sure to uninstall all A-Scan, B-Scan, and UBM software before beginning installation of the Connect software.

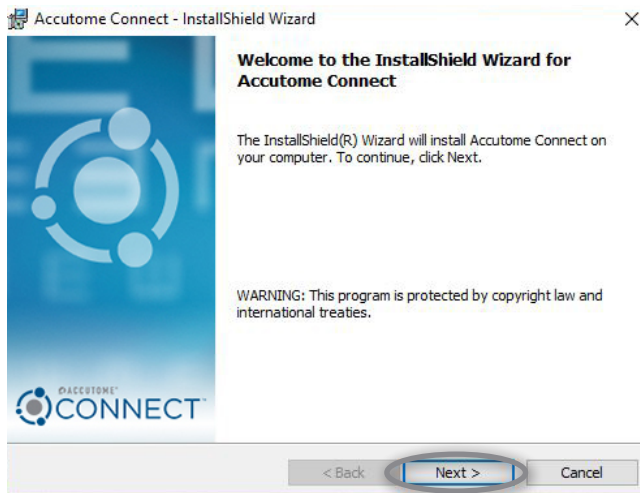
Note: DO NOT plug the Accutome probe into the USB port until instructions prompt you to do so.

1. **Step One:** Insert the USB stick which contains the Accutome Connect installation package. Open [My Computer](#) and double click on the [Accutome Connect USB disk](#).
2. **Step Two:** Right click on [Setup Accutome Connect x.xx.xx For 64-bit OS](#) and select [Run as Administrator](#).
3. **Step Three:** It will take several seconds for the Installation to open. Click [Yes](#) button if Windows system pop-out a [User Account Control](#) window with following message [Do you want to allow this app from an unknown publisher to make changes to your device?](#)

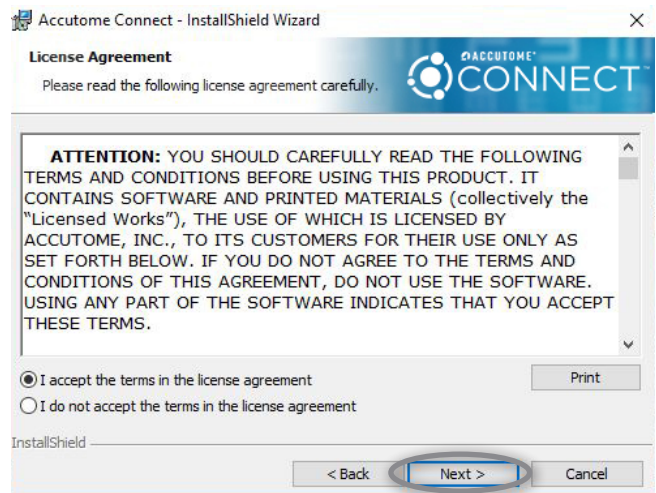
[Setup Accutome Connect x.xx.xx For 64-bit OS.exe](#)



4. **Step Four:** When the **Welcome to the InstallShield Wizard for Accutome** window appears, click **Next**.



5. **Step Five:** Click **I accept the terms in the license agreement** when the **License Agreement** window appears. Click **Next**. Click **Install**.



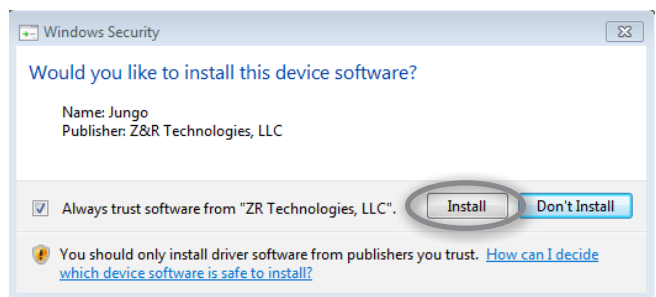
6. **Step Six:** The **Welcome to Setup for DirectX** window will appear on desktop at this time.

Note: If it does not appear automatically, Double click on the icon **Launch DXSETUP.exe** on the desktop to install Microsoft DirectX 9.0 manually.

7. **Step Seven:** Click **I Accept Agreement**. Click **Next**. Click **Next** to start installation of Direct X. Click **Finish** to complete installation Direct X on your system.

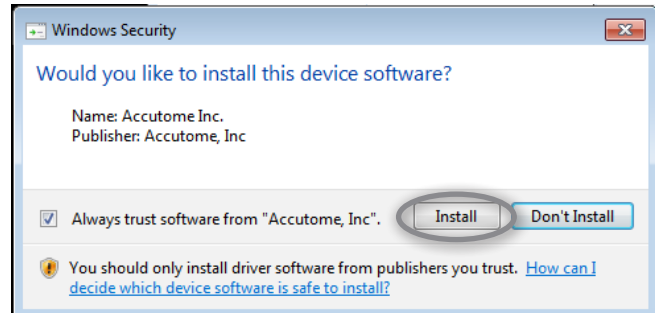


8. **Step Eight:** After install Microsoft DirectX 9.0 the **Would you like to install this device software?** Name: **Jungo** window will appear on the desktop. Select **Always trust software from ZR Technologies, LLC**. Click **Install** button to install the Jungo device driver.

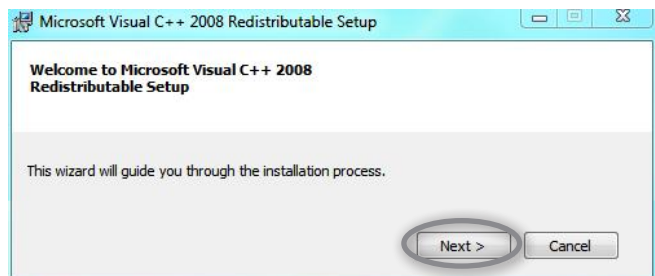


Installation Instructions

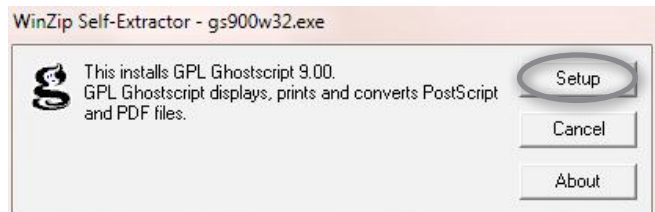
- Step Nine:** After installing the Jungo driver, the **Would you like to install this device software?** Name: Accutome Inc. window will appear on the desktop. Select Always trust software from **Accutome, Inc.** Click **Install** to install the Accutome probe device driver.
- Step Ten:** Click **Finish** to close the **Install Accutome Connect** window and complete the installation steps for required files and libraries for running **Accutome** applications.



- Step Eleven:** The **Microsoft Visual C++ 2008 Redistributable Setup** window will appear on the desktop at this time.
Note: If it does not appear automatically, double click on the icon **Install vcredist_x86.exe** on the desktop to install manually.
- Step Twelve:** Click **Next** to start installation of **Microsoft Visual C++ 2008 Redistributable Setup**.



- Step Thirteen:** The **WinZip Self-Extractor - gs900w32.exe** window will appear on the desktop at this time.
Note: If it does not appear automatically, double click the icon **Launch gs900win32.exe** on the desktop to install **Ghostscript 9.00** manually.



- Step Fourteen:** Click **Setup**. Then click **Install** to start installation of Ghostscript 9.00.

- Step Fifteen:** After all installations are complete, please plug in all Accutome probes.
[Please allow time for Probes to be recognized by the computer]

- Step Sixteen:** Please make sure the **Power Options** of your PC/Laptop are set to **High Performance**. You may need to change the settings.

- Step Seventeen:** Double click the **Accutome Connect.exe** icon on the desktop to start the program.

For assistance with the device upgrade or any other questions, please feel free to contact Accutome Diagnostic Support at diagnostics@accutome.com or 610.889.0200



1-800-979-2020 • 610-889-0200 • FAX 610-889-3233 • info@accutome.com • www.accutome.com

Total Solutions Provider for all of your ophthalmic needs.

ACCUTOME SURGICAL

Diamond Knives, Steel Knives, Sutures and Handheld Surgical Instruments.

ACCUTOME CLINICAL

Office Medications and Supplies.

ACCUTOME DIAGNOSTIC

A-Scans, B-Scans, Pachymeters, Tonometer and UBM.

ACCUTOME REPAIR CENTER

- Quick turnaround for most brands of Diamond Knives and Handheld Instruments.
- Diagnostic Equipment.

ORDERING

Call toll free (800) 979.2020 US and Canada
(610) 889.0200 International
+31 (0) 485.350300 Europe
Monday thru Friday 8:30AM - 8PM EST
Fax: (610) 889.3233
Email: info@accutome.com
Web: www.accutome.com

SHIPPING

Ground - Via UPS Ground Service
Air - Via best method

Saturday - Orders must be placed before 3PM EST
Friday to ensure Saturday delivery.

Payment should be made by check, Bank Transfer, Visa, MasterCard or American Express.

CONTACT US



WATCH RESOURCES

youtube.com/c/accutome



LIKE US

facebook.com/pages/Accutome-Inc



TWEET US

twitter.com/accutome



FOLLOW US

linkedin.com/company/accutome-inc.



GOOGLE+

plus.google.com/+Accutome/



Distributed by: