



4Sight™ Ophthalmic Ultrasound Diagnostic Unit DICOM Setup Quick Reference Guide

www.accutome.com

3222 Phoenixville Pike, Bldg 50 | Malvern, PA 19355 USA | info@accutome.com
800.979.2020 | 610.889.0200 | F: 610.889.3233 | European Office +31 (0) 485-350300



Setup DICOM Worklist and PACS

1. Turn on 4Sight system.
2. On the Home Screen select the Settings Button.



3. Press the “Facility Tab” and enter facility information.
(Name, Address, and Telephone Number)

A screenshot of the 'Facilities' tab in the application. It shows a form for entering facility information. The fields are: Name (ACCUTOME), Address (3222 Phoenixville Pike), City (Malvern), Zip (19355), State (PA), Country (USA), and Telephone (610 8890200).

Name :	ACCUTOME
Address :	3222 Phoenixville Pike
City :	Malvern
Zip :	19355
State :	PA
Country :	USA
Telephone :	610 8890200

4. Press “General” tab.
5. Select “DICOM Servers” tab.
6. The facility information that has been entered should show up on top.

A screenshot of the 'DICOM Servers' tab. At the top, it shows the facility information entered in the previous step: Name: ACCUTOME, Address: 3222 Phoenixville Pike, Malvern, PA 19355, USA, Phone: 610-8890200.

Folder	DICOM Servers
Information of Facility used in Exporting DICOM SOPs	
Name:	ACCUTOME
Address:	3222 Phoenixville Pike, Malvern, PA 19355, USA
Phone:	610-8890200

7. Enter the PACS server information:
 - Local AE Title
 - Display as
 - IP Address or Host Name
 - AE Title
 - Port Number*(Information should be provided by your DICOM Administrator)*

A screenshot of the 'PACS' configuration screen. Several fields are highlighted with red boxes: Local AE Title (4SIGHTTEST), Display as (4SIGHTSERVER), IP address or host name (xx.xxx.x.xxx), AE title (4SIGHTSERVER1), and Port number (62200).

Local AE Title	4SIGHTTEST
Remote Servers	List of Remote Servers
	4SIGHTSERVER
Display as	4SIGHTSERVER
IP address or host name	xx.xxx.x.xxx
AE title	4SIGHTSERVER1
Port number	62200
DICOM Folder	C:\Accutome\DICOM\

8. If both PACS and Worklist are using the same server you will be able to copy the server information by selecting “**Duplicate to Worklist Server**”.

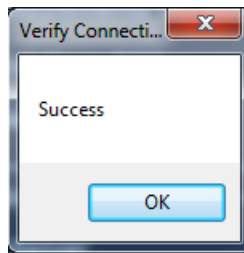


9. Select **“Save Server”**

- PACS server information will copy into the Worklist server information fields.
- Press **“Set Selected as Default”** button.
- Press **“Verify Connection”** button.

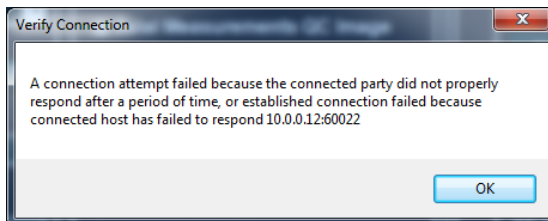
*(If **“Duplicate to Worklist Server”** was selected, information will be copied in worklist fields already. Make sure you change the **“Port Number”** to the correct worklist port number)*

e



You should see a pop-up window that says Success

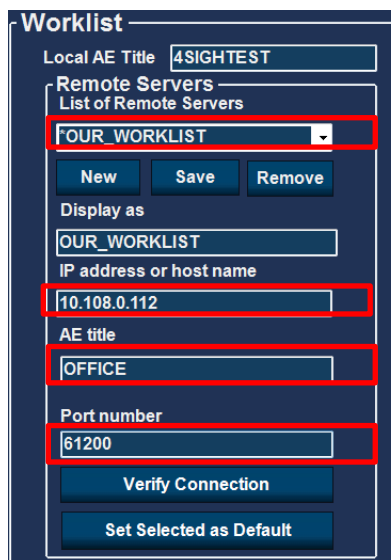
If you see any other message, check that your Server information is entered correctly.



10. If PACS and Worklist are on two separate servers,

- Enter Worklist Server Information:
 - Local AE Title
 - Display As
 - IP Address or Host Name
 - AE Title
 - Port Number

(Information should be provided by your DICOM Administrator)



11. Press **“Save”** button.

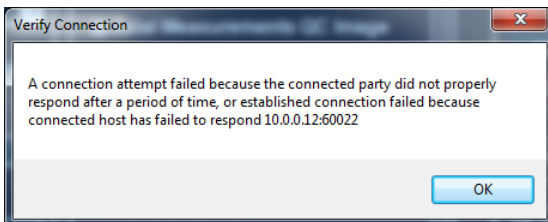
12. Press **“Set Select as Default”** button.

13. Press **“Verify Connection”** button.



You should see a pop-up window that says Success

If you see any other message, check that your Server information is entered correctly.



14. Press **“Done”** to save changes and exit setup.



For assistance with the device upgrade or any other questions please feel free to contact Accutome diagnostic support at info@accutome.com or 610-889-0200.