



**B-Scan Vet Plus**  
Installing to Windows 10 (32 bit)

[www.accutome.com](http://www.accutome.com)

3222 Phoenixville Pike, Bldg 50 | Malvern, PA 19355 USA | [info@accutome.com](mailto:info@accutome.com)  
800.979.2020 | 610.889.0200 | F: 610.889.3233 | European Office +31 (0) 485-350300

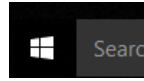


## Installing to Windows 10 (32 bit)

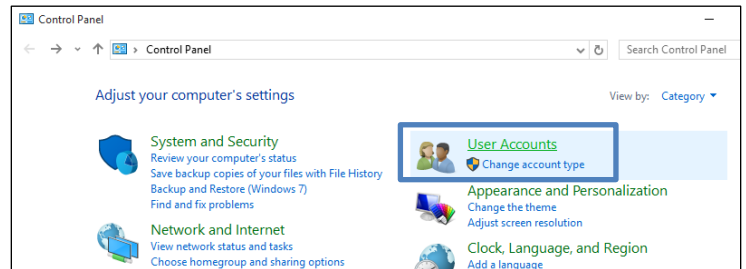
### 1. Pre-installation settings.

(Turn off user account controls)

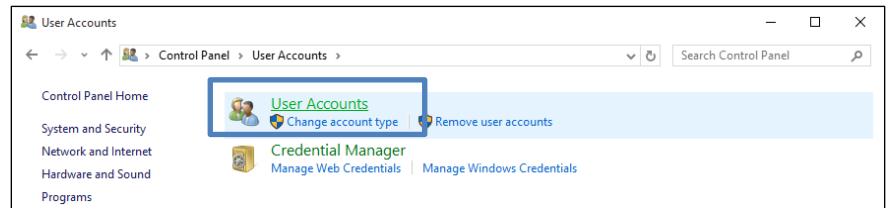
- Control Panel
  - At the desktop, right click on the Windows Start Icon and select **“Control Panel”**



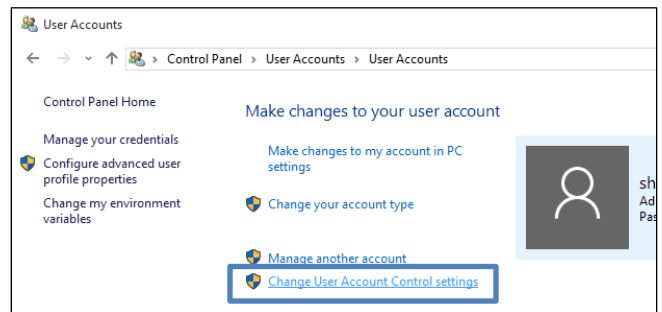
### 2. Select **“Users Accounts”**.



### 3. Select **“User Accounts”** again.

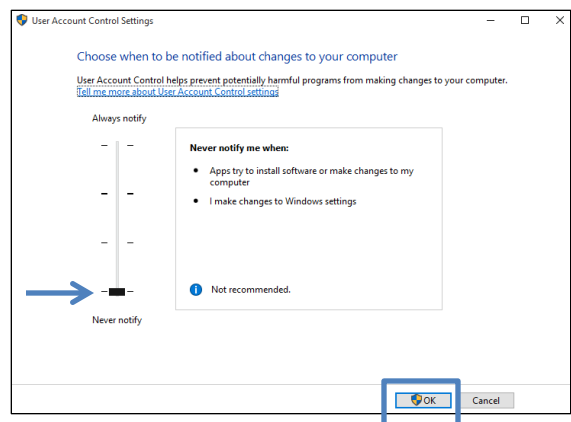


### 4. Select **“Change User Account Control Settings”**.



### 5. Drag slide-bar to **“Never Notify”**.

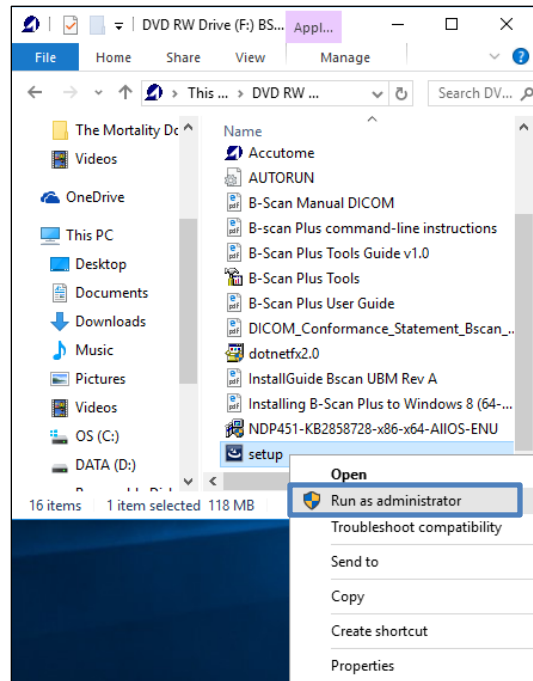
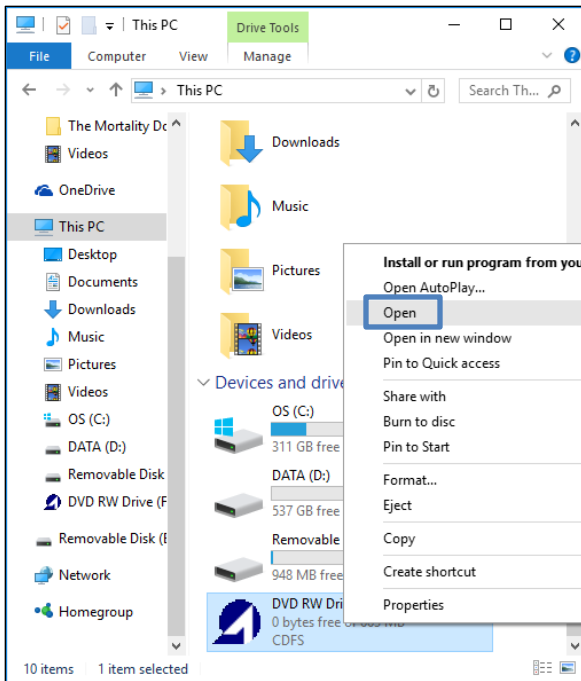
### 6. Select **“OK”**



### 7. Restart the computer.

## 8. Run as Administrator

- Once computer has restarted after the DSE has been disabled, open File Explorer (*Click on Windows start menu, Select File Explorer from List*) **(Make sure Installation Disk is Loaded)**
- **Select** This PC from the list
- Right click on the Accutome B-Scan software disk and select **Open**
  - Locate **Setup**
  - Right click on **Setup** and select **Run as Administrator**



## 9. Follow the installation prompts until installation is complete.

For assistance with the device upgrade or any other questions please feel free to contact Accutome diagnostic support at [info@accutome.com](mailto:info@accutome.com) or 610-889-0200.